

# Acoustic Ceiling Hangers

Type ACH



## Design Features

- High resilience first grade natural rubber elements with deflections up to 3.5 mm.
- Available in two sizes for loads from 5 kg to 100 kg.
- Typical force isolation at maximum load of 44 dB to 46 dB @ 125 Hz.
- Integral failsafe steel overload washers.
- All steel components are zinc plated.
- Capable of 15° angular misalignment.
- Can be fitted into a wire tie, drop rod or a strut type support to an acoustic ceiling.

## Typical Applications

- Acoustic Ceilings.
- Pipework.
- Axial Fans and Fan Coil Units.
- Ductwork and Attenuators.
- Air Conditioning Equipment.

Designed specifically for applications where audible noise attenuation is of most concern, the ACH offers a low cost alternative to larger more traditional spring and rubber hangers.

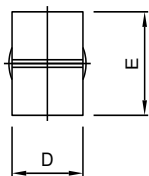
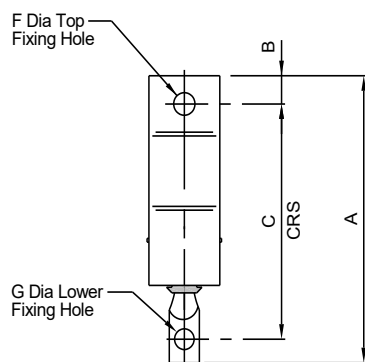
Primarily used to effectively decouple mass acoustic ceilings from the supporting building structure – thus preventing noise breakout or break-in.

The ACH may also be used to reduce noise transmission from <sup>®</sup> air conditioning equipment suspended in the ceiling void.



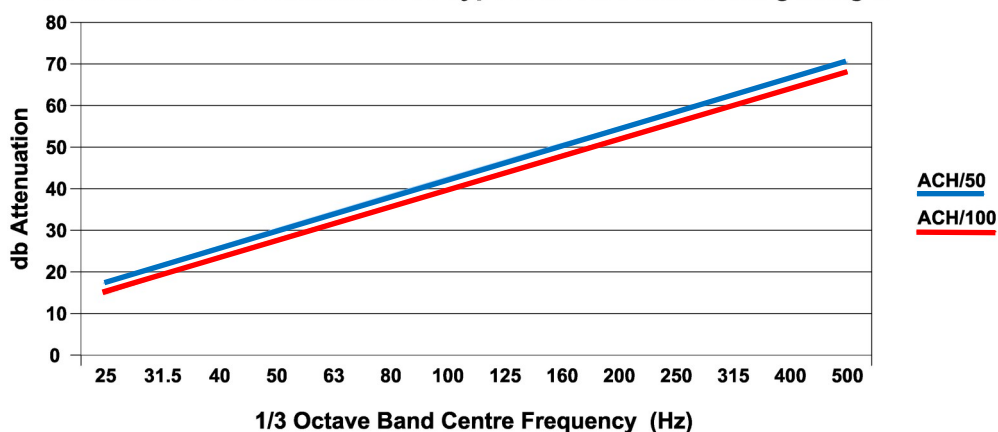
## Type ACH / 50 and ACH / 100

### TYPE ACH ACOUSTIC CEILING HANGERS

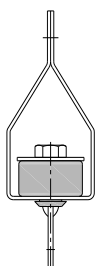


PART No.	RATED LOAD (kg)	DEFLECTION AT RATED LOAD (mm)	DIMENSIONS (mm)							WT (kg) MAX
			A	B	C	D	E	F	G	
ACH / 50	50	3.5	153	15	125	40	55	11	11	0.3
ACH / 100	100	3.5	153	15	125	40	55	11	11	0.3

### Structural Force Attenuation of Type ACH Acoustic Ceiling Hanger



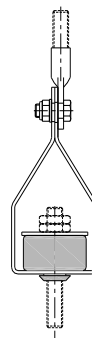
#### ACH / 50 ACH / 100 Standard Variant



Top Fixing – Suitable for Flat Strapping

Bottom Fixing – Suitable for Flat Strapping

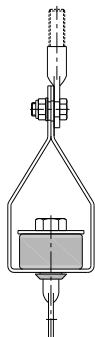
#### ACH / 50 / M10 ACH / 100 / M10 M10 Drop Rod Variant



Top Fixing – Suitable for M10 Drop Rod

Bottom Fixing – Suitable for M10 Drop Rod

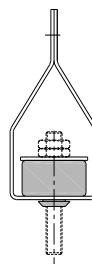
#### ACH / 50 / M10 / FS ACH / 100 / M10 / FS M10 Drop Rod & Flat Strap Variant



Top Fixing – Suitable for M10 Drop Rod

Bottom Fixing – Suitable for Flat Strapping

#### ACH / 50 / NFS ACH / 100 / NFS Flat Strap & M10 Drop Rod Variant



Top Fixing – Suitable for Flat Strapping

Bottom Fixing – Suitable for M10 Drop Rod

**For full installation instructions please refer to our data sheet DS086.**

**For more detailed information and technical assistance please contact our Technical Department.**

In the interests of continual development, the Company reserves the right to make modifications to these details without notice.



#### Christie & Grey Ltd

Morley Road,  
Tonbridge, Kent  
TN9 1RA, England

T: +44 (0)1732 371100  
E: sales@christiegrey.com  
W: www.christiegrey.com

