

Rubber Hangers

Type RH



Design Features

- Epoxy powder coated steel frame tested to 5 x rated load. Other steel parts are zinc plated.
- Rubber hangers supplied with failsafe steel overload washers.
- Rubber hangers have natural rubber elements with deflections up to 8 mm.
- Capable of up to 15° angular misalignment.
- Can be fitted in drop rod or direct to supporting structure.

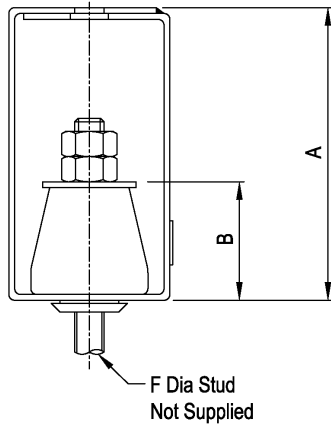
Typical Applications

- Pipework
- Axial Fans and Fan Coil Units.
- Ductwork and Attenuators.
- Exhaust Systems.
- Acoustic Ceilings.
- Any other suspended plant.

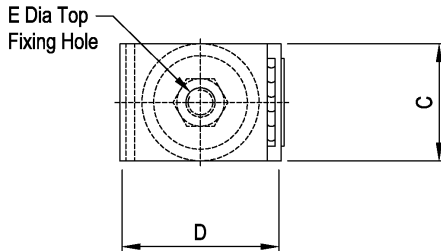
A comprehensive range of rubber hangers offering the designer optimum performance at higher audible frequencies if noise control is paramount.

Refer to leaflet PL007 for our Spring Hanger range.



TYPE RH

TYPE RH RUBBER HANGERS

PART No.	COLOUR CODE	RATED LOAD (kg)	DEFLECTION AT RATED LOAD (mm)	DIMENSIONS (mm)						MAX WT (kg)
				A	B	C	D	E	F	
RH28	YELLOW	28	6							
RH50	BLUE	50	6	100	41	40	55	10	M10	0.25
RH80	RED	80	6							
RH110	YELLOW	110	8							
RH180	BLUE	180	8	140	48	70	90	13	M12	1.05
RH280	RED	280	8							

PIPE WEIGHT / LOAD PER HANGER


PIPE BORE (mm)	WEIGHT per METRE (kg)	LOAD per HANGER AT TYPICAL SPACINGS (kg)					
		1.5 m	2 m	2.5 m	3 m	3.5 m	4 m
50	10	15	20	25	30	-	-
65	14	21	28	35	42	49	-
80	18	27	36	45	54	63	-
100	26	39	52	65	78	91	-
125	34	51	68	85	102	119	136
150	44	66	88	110	132	154	176
200	86	129	172	215	258	-	-

Pipe weights are based on BS EN 10255, BS EN 10216-1 and BS EN 10217-1 for pipes with maximum volume of water and standard thermal insulation.

Installation Notes:

- Pipes should be supported on either side of changes of direction and additional hangers used to support heavy fittings and vertical droppers.
- For larger pipe sizes two hangers can be used at each support position.

For full instructions please refer to our data sheet DS029.

For more detailed information and technical assistance please contact our Technical Department.

In the interests of continual development, the Company reserve the right to make modifications to these details without notice.



Christie & Grey Ltd
Morley Road,
Tonbridge, Kent
TN9 1RA, England

T: +44 (0)1732 371100
E: sales@christiegrey.com
W: www.christiegrey.com



Christie & Grey
SINCE 1914