

Joist Spring and Rubber Acoustic Ceiling Hangers

Type JSH/JRH



A comprehensive range of steel spring and rubber acoustic ceiling hangers, offering the designer a choice between low frequency vibration isolation or optimum performance at higher audible frequencies, if noise control is of paramount importance.

Design Features

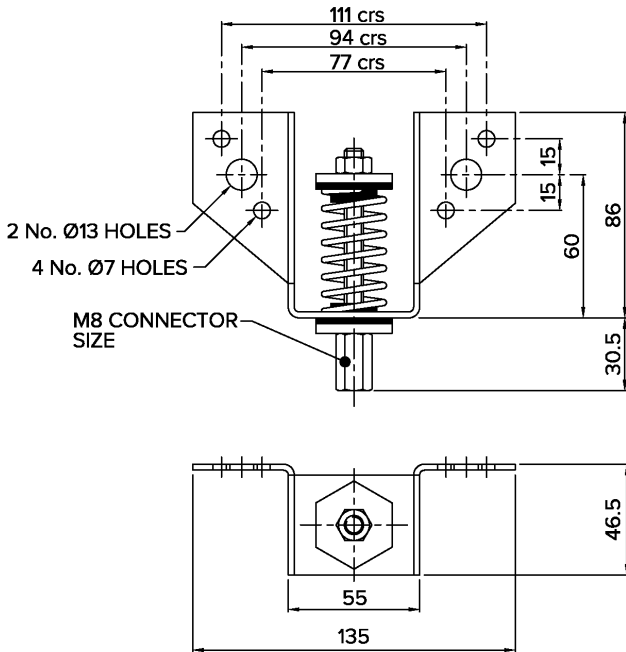
- Colour coded helical steel springs to BS1726 Class B with nominal deflections up to 20 mm, laterally stable with 50% overload capacity.
- Rubber inserts for high frequency attenuation on Type JSH also prevent drop rod contacting hanger frame.
- Integral failsafe steel overload washers.
- All steel components are zinc plated.
- Capable of 15° angular misalignment.
- Rubber hangers have natural rubber elements with deflections up to 6 mm.

Typical Applications

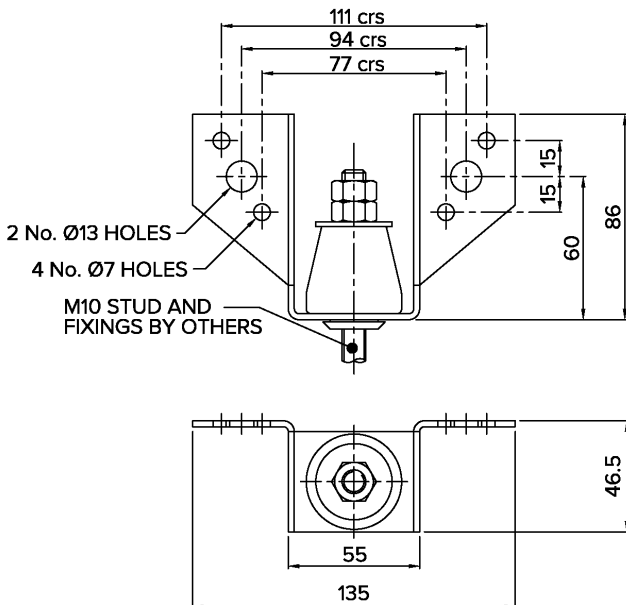
- Acoustic Ceilings.



Type JSH



Type JRH



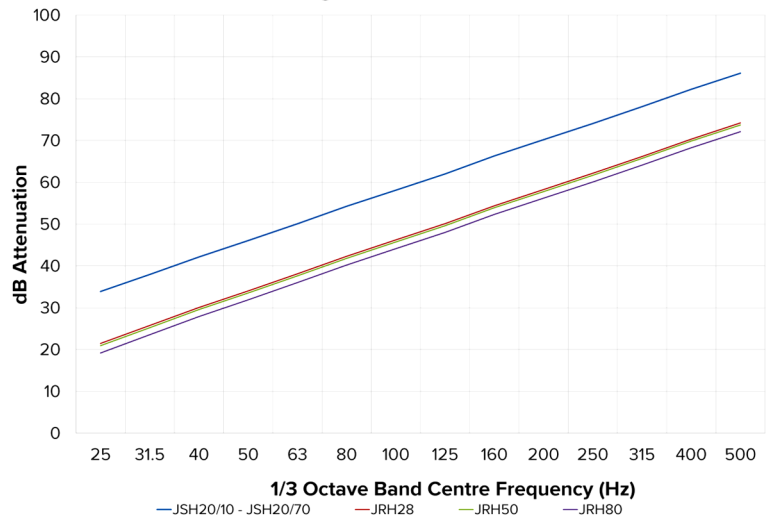
TYPE JSH ACOUSTIC CEILING HANGERS

PART No.	COLOUR CODE	RATED LOAD (kg)	DEFLECTION AT RATED LOAD (mm)	WT (kg) MAX
JSH20/10	PURPLE	10	20	0.33
JSH20/15	YELLOW	15	20	
JSH20/20	GREY	20	20	
JSH20/40	GREEN	40	20	
JSH20/70	RED	70	20	

TYPE JRH ACOUSTIC CEILING HANGERS

PART No.	COLOUR CODE	RATED LOAD (kg)	DEFLECTION AT RATED LOAD (mm)	WT (kg) MAX
JRH28	YELLOW	28	6	0.40
JRH50	BLUE	50	6	
JRH80	RED	80	6	

Structural Force Attenuation of JSH and JRH Acoustic Ceiling Hangers at rated load.



For more detailed information and technical assistance please contact our Technical Department.

In the interests of continual development, the Company reserves the right to make modifications to these details without notice.



Christie & Grey Ltd

Morley Road,
Tonbridge, Kent
TN9 1RA, England

T: +44 (0)1732 371100
E: sales@christiegrey.com
W: www.christiegrey.com



Christie & Grey
SINCE 1914