

# Shock Mounts

Type J Mount A, & J Deck Mount



The J mount is a curved metal strap specially designed to be a self contained mount that yields at a predetermined load.

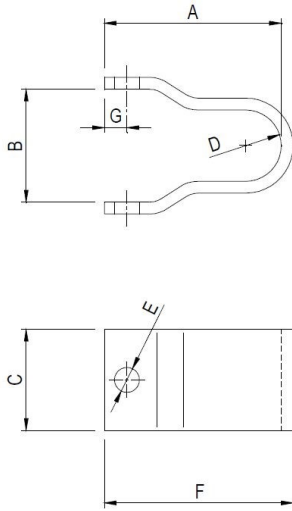
## Design Features

- J Mounts are self contained and need no additional mountings, such as decelerator units.
- J Mounts are inexpensive and require little maintenance.
- J Mounts have a galvanised surface finish for protection against corrosion.
- Used for marine applications which do not need to be realigned with other equipment after a shock event.

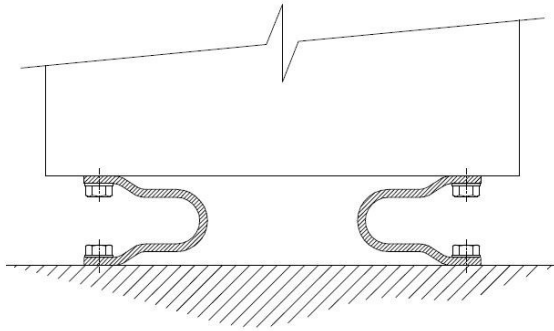
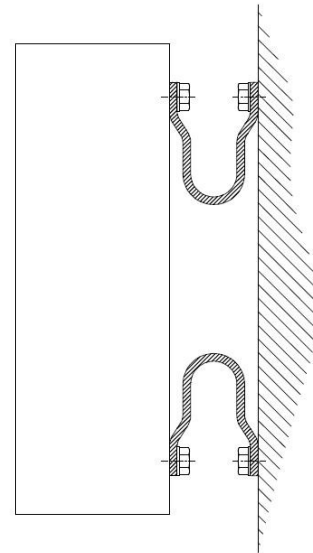
---

## Typical Applications

- Robust Electrical Equipment
- Switchgear and Control Panels
- Other Small Electrical Panels

**TYPE J MOUNT 'A' RANGE (METRIC)**


PART No.	LOAD RANGE (kg)	DIMENSIONS (mm)							Metal Thickness (mm)	Bolt Size	WT EACH (kg)
		A	B	C	D	E	F	G			
03A	2 - 5	149	95	55	30	9	151	19	2	M8	0.3
02A	5 - 10	149	95	55	30	9	152	19	3	M8	0.4
01A	10 - 20	149	95	55	30	11	153	19	4	M10	0.6
1A	20 - 35	149	95	70	30	11	154	19	5	M10	1.0
2A	35 - 45	149	95	90	30	11	154	19	5	M12	1.3
3A	45 - 60	149	95	85	30	13	155	19	6	M12	1.4
4A	60 - 80	149	95	105	30	13	155	19	6	M12	1.8
5A	80 - 115	149	95	95	30	17	157	19	8	M16	2.1
6A	115 - 180	149	95	85	30	21	159	19	10	M20	2.4

**Deck Mounting**

**Bulkhead Mounting**

**Application Notes**

- We recommend that all fixings bolts used are high tensile Grade 8.8 or higher.
- All connections to and from isolated equipment must include flexible lengths, not only to prevent transmission of vibration through the connections and allow freedom of movement, but also to avoid possible failure of the connections.

For more detailed information and technical assistance please contact our **Technical Department**.

In the interests of continual development, the Company reserve the right to make modifications to these details without notice.



**Christie & Grey Ltd**  
 Morley Road,  
 Tonbridge, Kent  
 TN9 1RA, England

T: +44 (0)1732 371100  
 E: sales@christiegrey.com  
 W: www.christiegrey.com



**Christie & Grey**  
 SINCE 1914