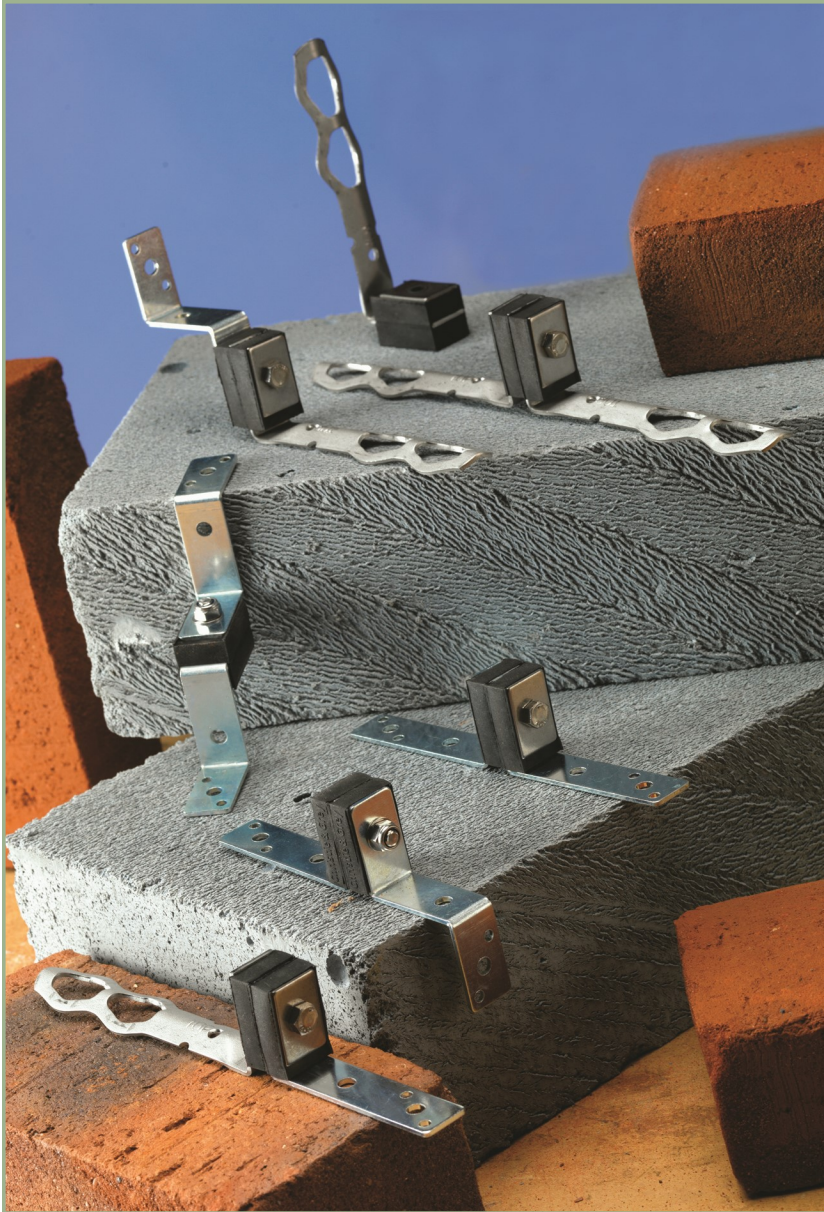


Acoustic Wall Ties

Type AWT



Acoustic brickwork and internal partition wall ties are designed to provide structural stability whilst attenuating noise and vibration between cavity walls.

Design Features

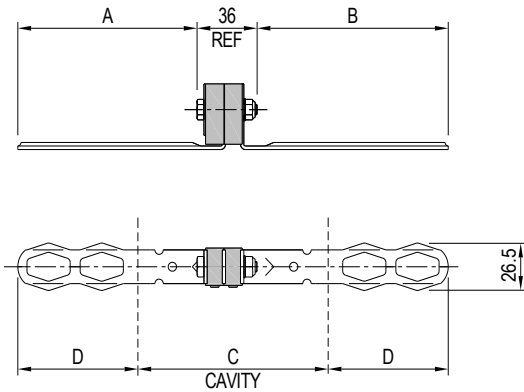
- Grade 304 stainless steel masonry ties, connecting bolts and washers.
- BZP mild steel 'Z' and 'L' brackets for internal partition walls.
- Natural rubber acoustic element ensures no metallic contact between external and inner brickwork and internal partitions.
- Load tested to 0.75kN in tension, compression and shear.
- Masonry ties designed to BS EN 845 with drip feature and safety ends.
- Variable tie lengths and fixing options available to suit cavity widths 50mm to 250mm.
- It is recommended that acoustic wall ties are used in conjunction with acoustic wall bearing pads.

Typical Applications

- Multiplex cinemas.
- Sound and recording studios.
- Hearing test rooms.
- Nightclubs.



Acoustic Wall Tie AWT.BW

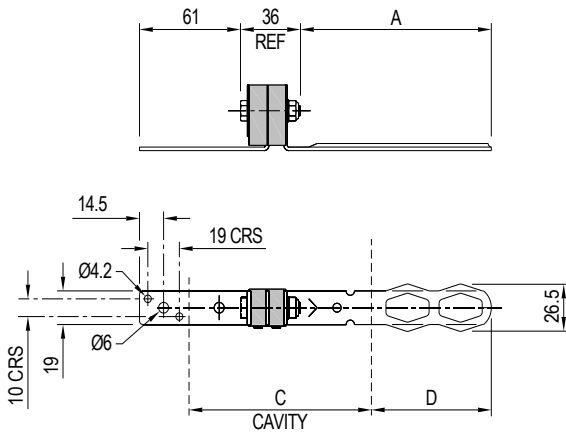


Brick / Blockwork to Brick / Blockwork - AWT.BW Style

Part No.	DIMENSIONS (mm)			
	A	B	CAVITY 'C'	EMBEDMENT DEPTH 'D'
AWT.BW.100	83	90	50 & 75 *	80 & 67 *
AWT.BW.125	108	115	100 & 125 *	80 & 67 *
AWT.BW.150	133	140	150 & 175 *	80 & 67 *
AWT.BW.175	158	165	200	80
AWT.BW.200	183	190	250	80

Note: The figures quoted above are nominal and for guidance only.
 * embedment for 75mm and 175mm cavity.
 All Stainless Steel fixings.

Acoustic Wall Tie AWT.LBW

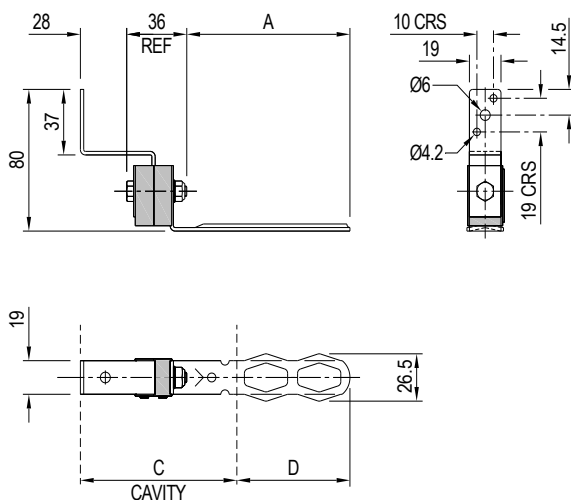


Brick / Blockwork to Inner Partition - AWT.LBW Style

Part No.	DIMENSIONS (mm)		
	A	CAVITY 'C'	EMBEDMENT DEPTH 'D'
AWT.LBW.100	90	75	80
AWT.LBW.125	115	100	80
AWT.LBW.175	165	150	80
AWT.LBW.200	190	175	80

Note: The figures quoted above are nominal and for guidance only.
 'L' Bracket B.Z.P all other components Stainless Steel.

Acoustic Wall Tie AWT.ZBW



Brick / Blockwork to Inner Partition - AWT.ZBW Style

Part No.	DIMENSIONS (mm)		
	A	CAVITY 'C'	EMBEDMENT DEPTH 'D'
AWT.ZBW.100	90	75	80
AWT.ZBW.125	115	100	80
AWT.ZBW.175	165	150	80
AWT.ZBW.200	190	175 & 200 *	80 & 55 *

Note: The figures quoted above are nominal and for guidance only.
 * embedment for 200mm cavity.
 'Z' Bracket B.Z.P all other components Stainless Steel.

For full installation instructions please refer to our data sheet DS087.

For more detailed information and technical assistance please contact our Technical Department.

In the interests of continual development, the Company reserves the right to make modifications to these details without notice.

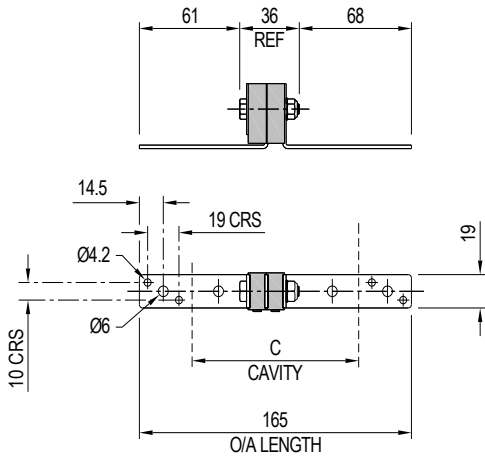


Christie & Grey Ltd
 Morley Road,
 Tonbridge, Kent
 TN9 1RA, England

T: +44 (0)1732 371100
 E: sales@christiegrey.com
 W: www.christiegrey.com



Acoustic Wall Tie AWT.LL



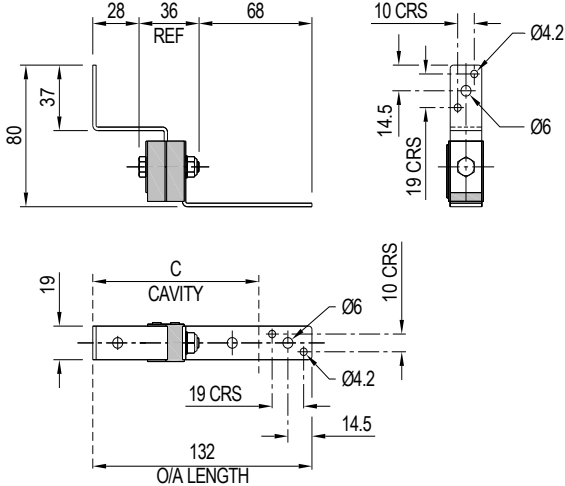
Inner Partition to Inner Partition - AWT.LL Style

Part No.	DIMENSIONS (mm)
	CAVITY 'C'
AWT.LL	50 TO 125

Note: The figures quoted above are nominal and for guidance only.

'L' Brackets B.Z.P all other components Stainless Steel.

Acoustic Wall Tie AWT.LZ



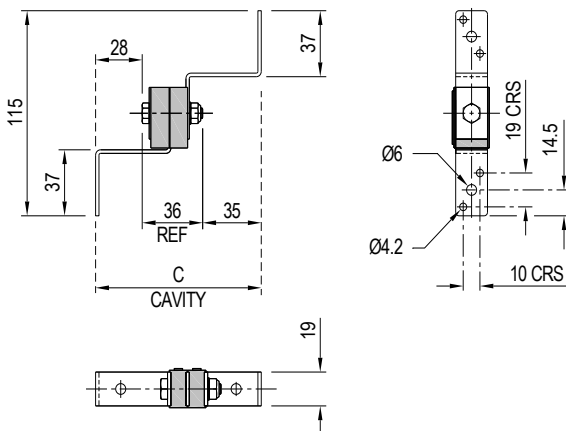
Inner Partition to Inner Partition - AWT.LZ Style

Part No.	DIMENSIONS (mm)
	CAVITY 'C'
AWT.LZ	75 to 100

Note: The figures quoted above are nominal and for guidance only.

'L' and 'Z' Brackets B.Z.P all other components Stainless Steel.

Acoustic Wall Tie AWT.ZZ



Inner Partition to Inner Partition - AWT.ZZ Style

Part No.	DIMENSIONS (mm)
	CAVITY 'C'
AWT.ZZ	100

Note: The figures quoted above are nominal and for guidance only.

'Z' Brackets B.Z.P all other components Stainless Steel.

For full installation instructions please refer to our data sheet DS087.

For more detailed information and technical assistance please contact our Technical Department.

In the interests of continual development, the Company reserves the right to make modifications to these details without notice.



Christie & Grey Ltd

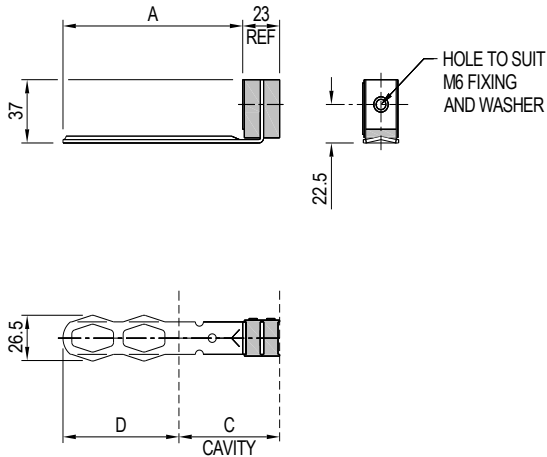
Morley Road,
Tonbridge, Kent
TN9 1RA, England

T: +44 (0)1732 371100
E: sales@christiegrey.com
W: www.christiegrey.com



Christie & Grey
SINCE 1914

Acoustic Wall Tie AWT.WPBW



Wind Post to Brick / Blockwork - AWT.WPBW Style

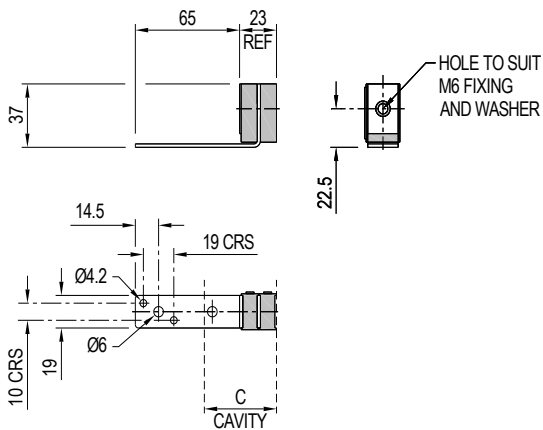
Part No.	DIMENSIONS (mm)		
	A	CAVITY 'C'	EMBEDMENT DEPTH
AWT.WPBW.125	112	50	85
AWT.WPBW.150	137	75	85
AWT.WPBW.175	162	100	85
AWT.WPBW.200	187	125 & 150 *	85 & 60 *

Note: The figures quoted above are nominal and for guidance only.

* embedment for 150mm cavity.

All Stainless Steel fixings.

Acoustic Wall Tie AWT.WPL



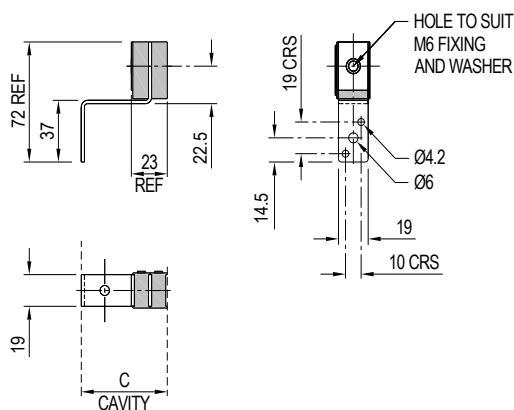
Wind Post to Inner Partition - AWT.WPL Style

Part No.	DIMENSIONS (mm)	
	CAVITY 'C'	
AWT.WPL	25 to 65	

Note: The figures quoted above are nominal and for guidance only.

'L' Bracket B.Z.P all other components Stainless Steel.

Acoustic Wall Tie AWT.WPZ



Wind Post to Inner Partition - AWT.WPZ Style

Part No.	DIMENSIONS (mm)	
	CAVITY 'C'	
AWT.WPZ	55	

Note: The figures quoted above are nominal and for guidance only.

'Z' Bracket B.Z.P all other components Stainless Steel.

General Notes

Check acoustic wall tie is suitable for the type of installation and cavity size i.e. external face brick / blockwork to inner cavity walls, wind post or studwork.

Each masonry tie must be embedded a minimum of 50mm into brick / blockwork.

Acoustic wall ties must be installed with rubber part upper most or 'top' on masonry tie.

Ensure wall loading and spacings do not exceed acoustic wall tie maximum working load of 0.75kN.

It is important that no oil or solvent be allowed to contaminate the wall tie rubber during installation (refer to data sheet DS 041 for details of natural rubber properties).

For full installation instructions please refer to our data sheet DS087.

For more detailed information and technical assistance please contact our Technical Department.

In the interests of continual development, the Company reserves the right to make modifications to these details without notice.



Christie & Grey Ltd

Morley Road,
Tonbridge, Kent
TN9 1RA, England

T: +44 (0)1732 371100
E: sales@christiegrey.com
W: www.christiegrey.com



Christie & Grey
SINCE 1914